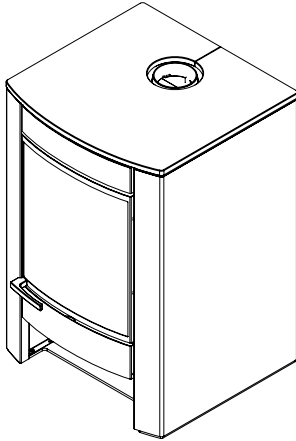


ZK60**THERMO-STOVES**

mm 680x660xh1080

CE EN -13240 certification

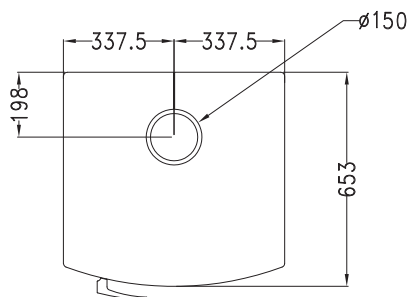
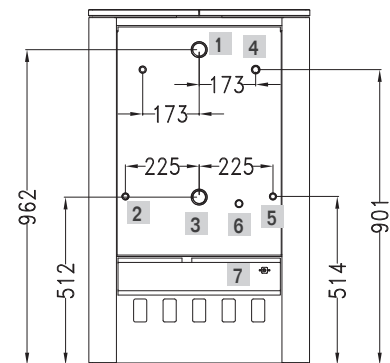
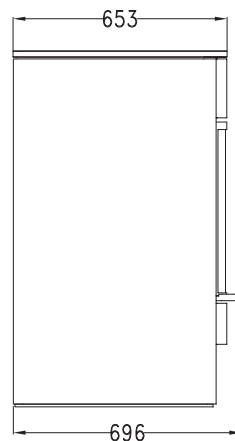
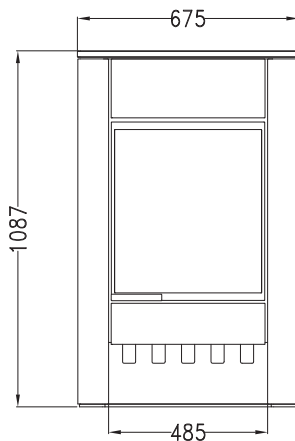


ZK60

Black

STANDARD EQUIPMENT

- above flue \varnothing 150 mm
- safety heat exhaust outfitted for connection to a close circuit
- pump thermostat
- primary air thermostatic regulation



- 1 Out connection 1" 1/4 female
- 2 Connection for thermal outflow circuit 1/2" male
- 3 In connection 1" 1/4 female
- 4 Connection for thermal outflow tube 1/2" female
- 5 Connection for thermal outflow circuit 1/2" male
- 6 Boiler exhaust 1/2" female
- 7 Pump thermostat

DATA SHEET

| | |
|---------------------------------------------------|-------------------------------------------|
| Nominal heat output: 18 kw | Nominal water heat output: 14.5 kw |
| Mean content of CO to 13% O ₂ : 0.06 % | Efficiency: 78.5 % |
| Maximum operating pressure: 1.5 bar | Boiler capacity: 26.5 Lt |
| Firebox capacity: 83 Lt | Fill opening (LxH): 35x25 cm |
| Mean flue gas temperature: 257 °C | Flue gas mass flow: 15.8 g/s |
| Flue depression: mbar 0.15 | Net weight/packaging included: kg 260/280 |